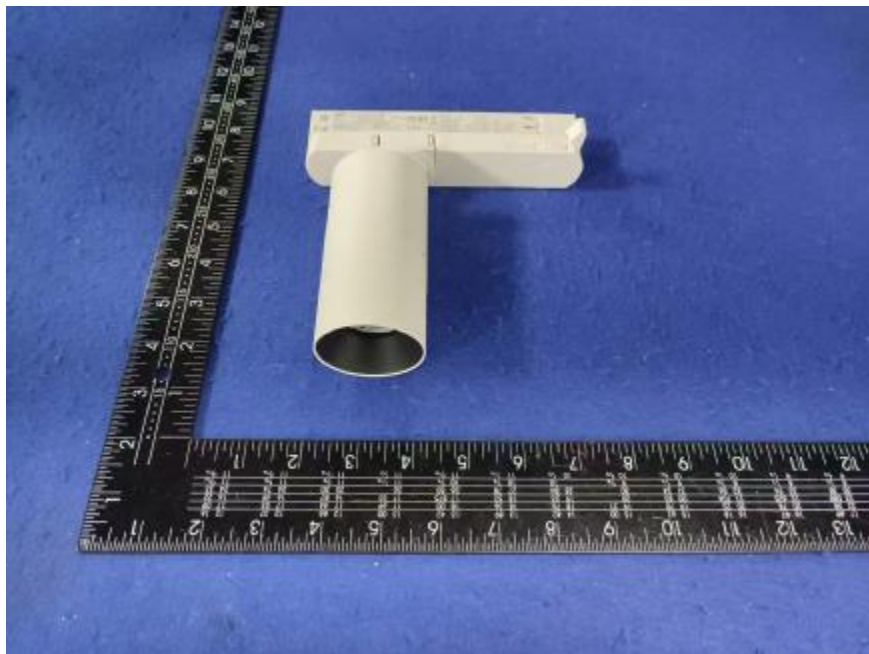


### Luminaire Photograph



Light Output Ratio:	81.2%	
Luminaire Power:	11.21 W	
SHR Nominal:	0.00	Calculated using the TM5
SHR Maximum:	0.30	fine grid method.

C Range: 0 - 360DEG  
C Interval: 30.0DEG  
Test Speed: MEDIUM  
Temperature: 25.3 °C  
Operators: zoe  
Test Date: 2024-9-12

Range: 0 - 180DEG  
Interval: 0.5DEG  
Test System: EVERFINE GO-SPEX500\_V1 SYSTEM V2.00.461  
Humidity: 65.0%  
Test Distance: 3.160m [K=1.0000]  
Remarks: LAMP: BXRH-30G10T0-C-83 Ra: 90  
LENS: PM-1082 15R  
DRIVER: SC20W150-500CG-4W 300mA  
30minutes warm-up

## LUMINOUS INTENSITY DISTRIBUTION DIAGRAM

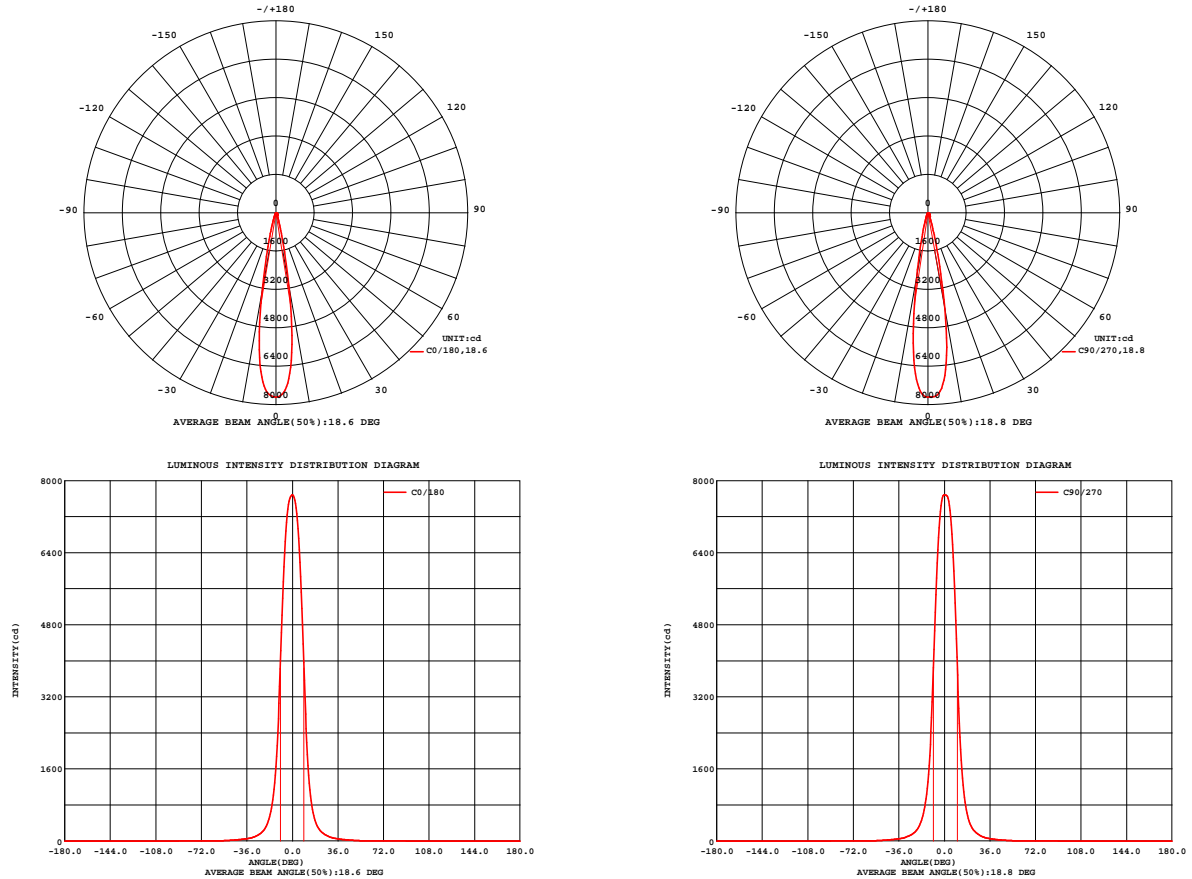


Fig. C0/C180

Fig. C90/C270

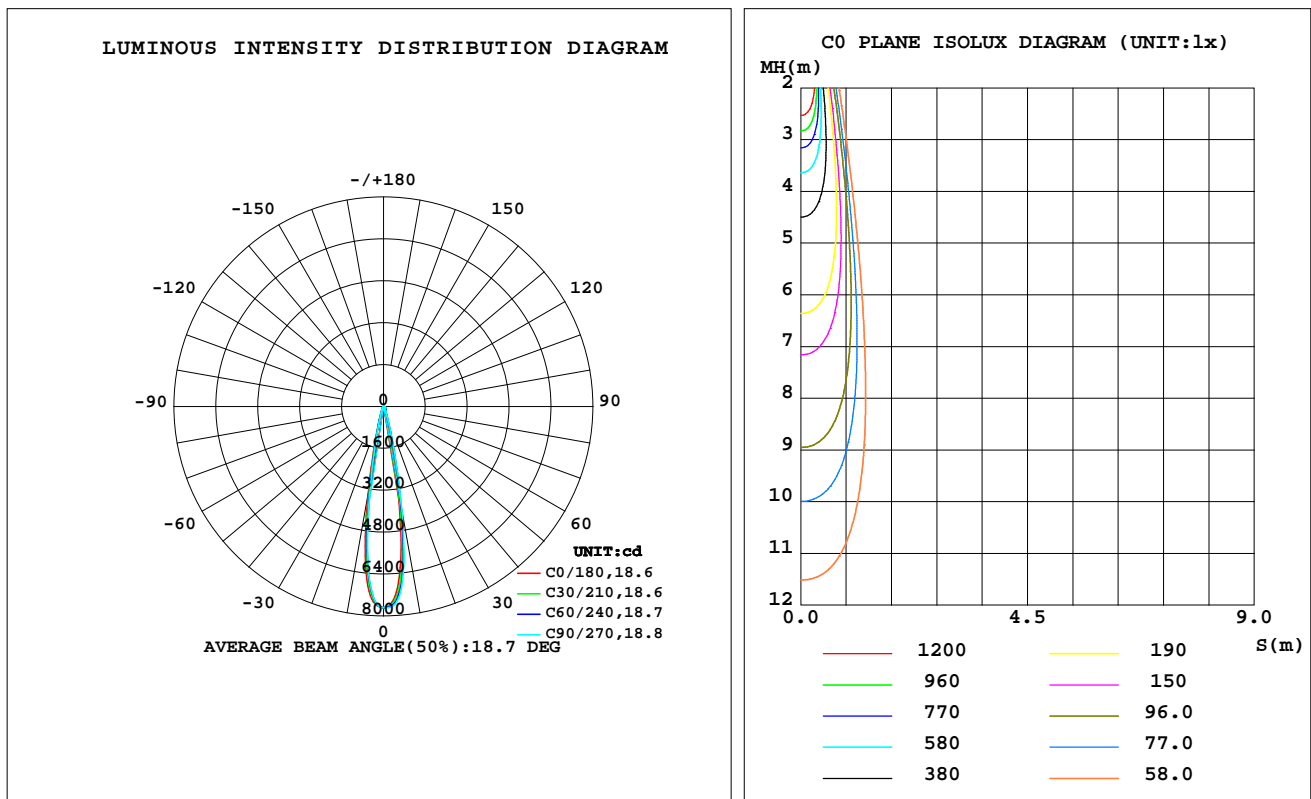
C Range: 0 - 360DEG  
C Interval: 30.0DEG  
Test Speed: MEDIUM  
Temperature: 25.3 °C  
Operators: zoe  
Test Date: 2024-9-12

Range: 0 - 180DEG  
Interval: 0.5DEG  
Test System: EVERFINE GO-SPEX500\_V1 SYSTEM V2.00.461  
Humidity: 65.0%  
Test Distance: 3.160m [K=1.0000]  
Remarks: LAMP: BXRH-30G10T0-C-83 Ra: 90  
LENS: PM-1082 15R  
DRIVER: SC20W150-500CG-4W 300mA  
30minutes warm-up

## LUMINAIRE PHOTOMETRIC TEST REPORT

Test:U:220.16V I:0.0593A P:11.210W PF:0.8541 Freq:49.99Hz Lamp Flux:1227.27x1 lm		
NAME: 2419.205-UA-300	TYPE:	WEIGHT:
SPEC.: 3000K	DIM.:	SERIAL No.: 2409121197
MFR.: RISE	SUR.: 0.001884785m2	Shielding Angle:

DATA OF LAMP		PHOTOMETRIC DATA Eff: 88.86 lm/W			
MODEL	Brideglux	I <sub>max</sub> (cd)	7681	S/MH(C0/180)	0.31
NOMINAL POWER(W)	11	LOR(%)	81.2	S/MH(C90/270)	0.28
RATED VOLTAGE(V)	220	TOTAL FLUX(lm)	996.12	UP,DN(C0-180)	0.0,43.3
NOMINAL FLUX(lm)	1227.27	CIE CLASS	DIRECT	UP,DN(C180-360)	0.0,37.9
LAMPS INSIDE	1	up(%)	0.0	CIBSE SHR NOM	0.00
TEST VOLTAGE(V)	220	down(%)	81.2	CIBSE SHR MAX	0.30



C Range: 0 - 360DEG  
C Interval: 30.0DEG  
Test Speed: MEDIUM  
Temperature:25.3℃  
Operators:zoe  
Test Date:2024-9-12

Range: 0 - 180DEG  
Interval: 0.5DEG  
Test System:EVERFINE GO-SPEX500\_V1 SYSTEM V2.00.461  
Humidity:65.0%  
Test Distance:3.160m [K=1.0000]  
Remarks: LAMP:BXRH-30G10T0-C-83 Ra:90  
LENS:PM-1082 15R  
DRIVER:SC20W150-500CG-4W 300mA  
30minutes warm-up



## ZONAL FLUX DIAGRAM

## ZONAL FLUX DIAGRAM:

	C0	C45	C90	C135	C180	C225	C270	C315		zone	total	%lum,lamp
10	3182	3751	4081	3850	3432	2952	2742	2912	0- 10	535.1	535.1	53.7,43.6
20	318.8	365.9	412.0	397.7	365.1	339.8	323.1	314.0	10- 20	321.1	856.2	85.9,69.8
30	85.23	91.59	98.01	93.48	92.27	90.08	87.60	82.61	20- 30	81.94	938.1	94.2,76.4
40	33.27	33.85	35.57	35.67	36.31	35.49	34.69	33.32	30- 40	34.85	972.9	97.7,79.3
50	11.47	11.47	12.29	12.65	13.01	12.59	12.24	11.88	40- 50	17.09	990.0	99.4,80.7
60	2.007	1.948	1.809	2.282	1.947	1.868	1.940	1.606	50- 60	5.414	995.5	99.9,81.1
70	0.1389	0.1453	0.1582	0.1619	0.1521	0.1355	0.1282	0.1227	60- 70	0.5265	996.0	100,81.2
80	0.0701	0.0586	0.0754	0.0604	0.0722	0.0510	0.0618	0.0500	70- 80	0.1022	996.1	100,81.2
90	0	0	0	0	0	0	0	0	80- 90	0.0375	996.1	100,81.2
100	0	0	0	0	0	0	0	0	90-100	0	996.1	100,81.2
110	0	0	0	0	0	0	0	0	100-110	0	996.1	100,81.2
120	0	0	0	0	0	0	0	0	110-120	0	996.1	100,81.2
130	0	0	0	0	0	0	0	0	120-130	0	996.1	100,81.2
140	0	0	0	0	0	0	0	0	130-140	0	996.1	100,81.2
150	0	0	0	0	0	0	0	0	140-150	0	996.1	100,81.2
160	0	0	0	0	0	0	0	0	150-160	0	996.1	100,81.2
170	0	0	0	0	0	0	0	0	160-170	0	996.1	100,81.2
180	0	0	0	0	0	0	0	0	170-180	0	996.1	100,81.2
DEG	LUMINOUS INTENSITY:cd									UNIT:lm		

C Range: 0 - 360DEG  
C Interval: 30.0DEG  
Test Speed: MEDIUM  
Temperature:25.3℃  
Operators:zoe  
Test Date:2024-9-12

Range: 0 - 180DEG  
Interval: 0.5DEG  
Test System:EVERFINE GO-SPEX500\_V1 SYSTEM V2.00.461  
Humidity:65.0%  
Test Distance:3.160m [K=1.0000]  
Remarks: LAMP:BXRH-30G10T0-C-83 Ra:90  
LENS:PM-1082 15R  
DRIVER:SC20W150-500CG-4W 300mA  
30minutes warm-up

### LUMINANCE LIMITATION CURVES

Test:U:220.16V I:0.0593A P:11.210W PF:0.8541 Freq:49.99Hz  
Lamp Flux:1227.27x1 lm

NAME: 2419.205-UA-300

TYPE:

WEIGHT:

SPEC.: 3000K

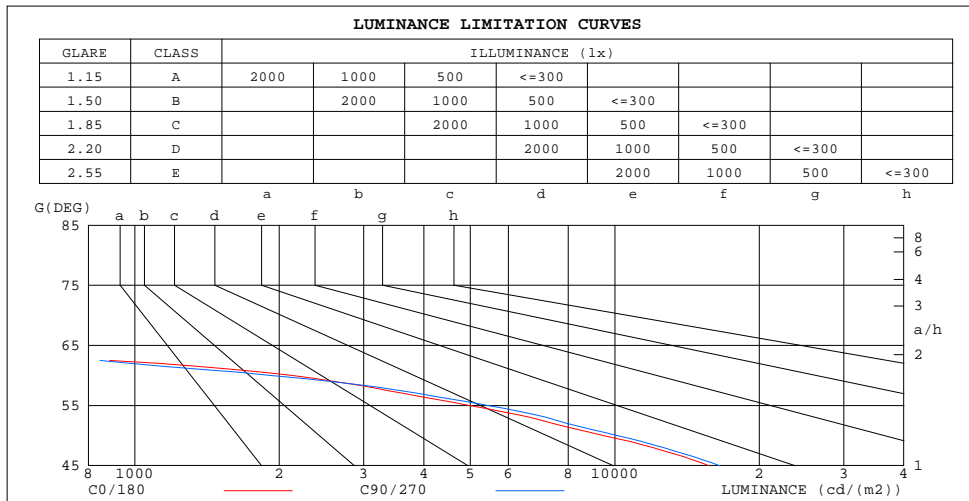
DIM.:

SERIAL No.: 2409121197

MFR.: RISE

SUR.: 0.001884785m2

Shielding Angle:



LUMINANCE cd/(m2)		
G(180)	C0/180	C90/270
85	310	310
80	214	230
75	207	222
70	216	245
65	326	364
60	2133	1919
55	4984	5449
50	9483	10137
45	15724	16540

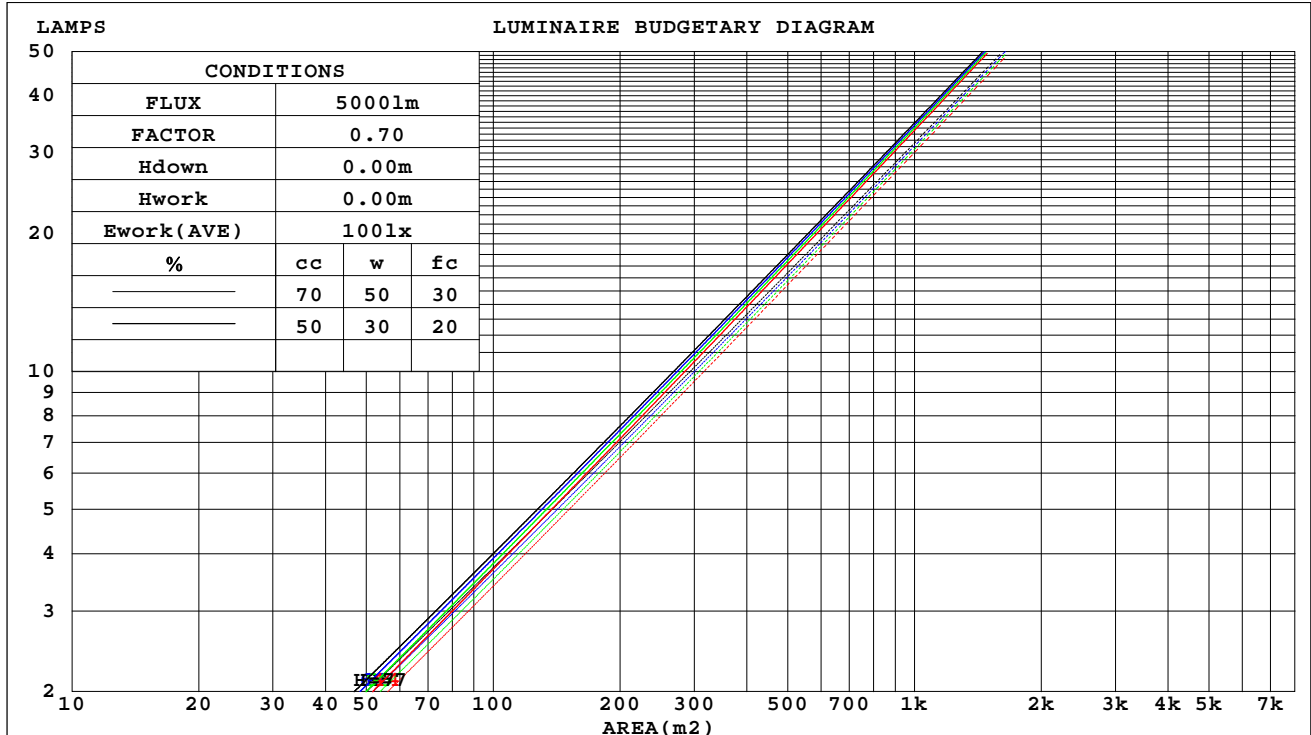
C Range: 0 - 360DEG  
C Interval: 30.0DEG  
Test Speed: MEDIUM  
Temperature:25.3°C  
Operators:zoe  
Test Date:2024-9-12

Range: 0 - 180DEG  
Interval: 0.5DEG  
Test System:EVERFINE GO-SPEX500\_V1 SYSTEM V2.00.461  
Humidity:65.0%  
Test Distance:3.160m [K=1.0000]  
Remarks: LAMP:BXRH-30G10T0-C-83 Ra:90  
LENS:PM-1082 15R  
DRIVER:SC20W150-500CG-4W 300mA  
30minutes warm-up

## CU AND LUMINAIRE BUDGETARY ESTIMATE DIAGRAM

Test:U:220.16V I:0.0593A P:11.210W PF:0.8541 Freq:49.99Hz Lamp Flux:1227.27x1 lm		
NAME: 2419.205-UA-300	TYPE:	WEIGHT:
SPEC.: 3000K	DIM.:	SERIAL No.: 2409121197
MFR.: RISE	SUR.: 0.001884785m2	Shielding Angle:

cc	80%			70%			50%			30%			10%			0
w	50%	30%	10%	50%	30%	10%	50%	30%	10%	50%	30%	10%	50%	30%	10%	0
fc	20%			20%			20%			20%			20%			0
RCR	RCR:Room Cavity Ratio															



C Range: 0 - 360DEG  
C Interval: 30.0DEG  
Test Speed: MEDIUM  
Temperature:25.3℃  
Operators:zoe  
Test Date:2024-9-12

Range: 0 - 180DEG  
Interval: 0.5DEG  
Test System:EVERFINE GO-SPEX500\_V1 SYSTEM V2.00.461  
Humidity:65.0%  
Test Distance:3.160m [K=1.0000]  
Remarks: LAMP:BXRH-30G10T0-C-83 Ra:90  
LENS:PM-1082 15R  
DRIVER:SC20W150-500CG-4W 300mA  
30minutes warm-up

### WEC AND CCEC

Test:U:220.16V I:0.0593A P:11.210W PF:0.8541 Freq:49.99Hz Lamp Flux:1227.27x1 lm		
NAME: 2419.205-UA-300	TYPE:	WEIGHT:
SPEC.: 3000K	DIM.:	SERIAL No.: 2409121197
MFR.: RISE	SUR.: 0.001884785m2	Shielding Angle:

cc	80%			70%			50%			30%			10%			0
w	50%	30%	10%	50%	30%	10%	50%	30%	10%	50%	30%	10%	50%	30%	10%	0
fc	20%			20%			20%			20%			20%			0
RCR	RCR:Room Cavity Ratio						Wall Exitance Coefficients(WEC)									
0.0																
1.0	.102	.058	.018	.096	.055	.017	.086	.049	.016	.077	.044	.014	.069	.040	.013	
2.0	.093	.051	.016	.089	.049	.015	.081	.045	.014	.073	.041	.013	.066	.038	.012	
3.0	.086	.046	.014	.083	.044	.013	.076	.041	.013	.070	.038	.012	.064	.035	.011	
4.0	.080	.042	.012	.077	.040	.012	.072	.038	.011	.066	.036	.011	.061	.033	.010	
5.0	.075	.038	.011	.073	.037	.011	.068	.035	.010	.063	.033	.010	.059	.032	.009	
6.0	.071	.035	.010	.068	.035	.010	.064	.033	.010	.060	.031	.009	.057	.030	.009	
7.0	.067	.033	.009	.065	.032	.009	.061	.031	.009	.058	.030	.009	.055	.028	.008	
8.0	.063	.031	.009	.061	.030	.009	.058	.029	.008	.055	.028	.008	.053	.027	.008	
9.0	.060	.029	.008	.058	.029	.008	.056	.028	.008	.053	.027	.008	.051	.026	.007	
10.0	.057	.027	.008	.056	.027	.008	.053	.026	.007	.051	.025	.007	.049	.025	.007	

cc	80%			70%			50%			30%			10%			0	
w	50%	30%	10%	50%	30%	10%	50%	30%	10%	50%	30%	10%	50%	30%	10%	0	
fc	20%			20%			20%			20%			20%			0	
RCR	RCR:Room Cavity Ratio						Ceiling Cavity Exitance Coefficients(CCEC)										
0.0	.155	.155	.155	.132	.132	.132	.090	.090	.090	.052	.052	.052	.017	.017	.017		
1.0	.136	.128	.121	.116	.110	.104	.080	.076	.072	.046	.044	.042	.015	.014	.014		
2.0	.121	.108	.097	.103	.093	.084	.071	.064	.058	.041	.037	.034	.013	.012	.011		
3.0	.108	.092	.079	.093	.079	.069	.064	.055	.048	.037	.032	.028	.012	.010	.009		
4.0	.097	.079	.065	.083	.068	.057	.057	.048	.040	.033	.028	.024	.011	.009	.008		
5.0	.088	.069	.055	.076	.060	.048	.052	.042	.034	.030	.025	.020	.010	.008	.007		
6.0	.081	.061	.047	.069	.053	.041	.048	.037	.029	.028	.022	.017	.009	.007	.006		
7.0	.074	.054	.040	.064	.047	.035	.044	.033	.025	.026	.019	.015	.008	.006	.005		
8.0	.069	.048	.034	.059	.042	.030	.041	.029	.021	.024	.017	.013	.008	.006	.004		
9.0	.064	.044	.030	.055	.038	.026	.038	.027	.019	.022	.016	.011	.007	.005	.004		
10.0	.059	.040	.026	.051	.034	.023	.036	.024	.016	.021	.014	.010	.007	.005	.003		

C Range: 0 - 360DEG  
C Interval: 30.0DEG  
Test Speed: MEDIUM  
Temperature:25.3℃  
Operators:zoe  
Test Date:2024-9-12

Range: 0 - 180DEG  
Interval: 0.5DEG  
Test System:EVERFINE GO-SPEX500\_V1 SYSTEM V2.00.461  
Humidity:65.0%  
Test Distance:3.160m [K=1.0000]  
Remarks: LAMP:BXRH-30G10T0-C-83 Ra:90  
LENS:PM-1082 15R  
DRIVER:SC20W150-500CG-4W 300mA  
30minutes warm-up

## UGR(Unified Glare Rating) Table

Test:U:220.16V I:0.0593A P:11.210W PF:0.8541 Freq:49.99Hz Lamp Flux:1227.27x1 lm										
NAME: 2419.205-UA-300					TYPE:			WEIGHT:		
SPEC.: 3000K					DIM.:			SERIAL No.: 2409121197		
MFR.: RISE					SUR.: 0.001884785m2			Shielding Angle:		
ceiling/cavity	0.7	0.7	0.5	0.5	0.3	0.7	0.7	0.5	0.5	0.3
walls	0.5	0.3	0.5	0.3	0.3	0.5	0.3	0.5	0.3	0.3
working plane	0.2	0.2	0.2	0.2	0.2	0.2	0.2	0.2	0.2	0.2
Room dimensions	Viewed crosswise					Viewed endwise				
x = 2H y = 2H	10.7	11.2	10.9	11.4	11.5	11.0	11.5	11.2	11.7	11.8
3H	10.5	11.0	10.7	11.2	11.4	10.8	11.3	11.0	11.5	11.7
4H	10.4	10.9	10.7	11.2	11.4	10.7	11.3	11.0	11.5	11.7
6H	10.4	10.8	10.6	11.1	11.3	10.7	11.1	10.9	11.4	11.6
8H	10.3	10.8	10.6	11.0	11.3	10.6	11.1	10.9	11.3	11.6
12H	10.3	10.7	10.6	11.0	11.2	10.6	11.0	10.9	11.3	11.5
4H 2H	10.5	11.0	10.7	11.2	11.4	10.8	11.3	11.0	11.5	11.7
3H	10.3	10.8	10.6	11.0	11.3	10.6	11.1	10.9	11.3	11.6
4H	10.2	10.6	10.5	10.9	11.2	10.5	10.9	10.8	11.2	11.5
6H	10.1	10.5	10.5	10.8	11.1	10.4	10.8	10.8	11.1	11.4
8H	10.1	10.4	10.4	10.7	11.1	10.4	10.7	10.7	11.0	11.4
12H	10.0	10.3	10.4	10.7	11.1	10.3	10.6	10.7	11.0	11.4
8H 4H	10.1	10.4	10.4	10.7	11.1	10.4	10.7	10.7	11.0	11.4
6H	9.9	10.2	10.4	10.6	11.0	10.2	10.5	10.7	10.9	11.3
8H	9.9	10.1	10.3	10.5	11.0	10.2	10.4	10.6	10.8	11.3
12H	9.8	10.0	10.3	10.5	10.9	10.1	10.3	10.6	10.8	11.2
12H 4H	10.0	10.3	10.4	10.7	11.1	10.3	10.6	10.7	11.0	11.4
6H	9.9	10.1	10.3	10.5	11.0	10.2	10.4	10.6	10.8	11.3
8H	9.8	10.0	10.3	10.5	10.9	10.1	10.3	10.6	10.8	11.2
Variations with the observer position at spacings(CIE Pub.117):										
S = 1.0H	+ 2.4 / - 7.8					+ 2.6 / - 7.8				
1.5H	+ 3.2 / - 5.1					+ 3.5 / - 5.0				
2.0H	+ 5.3 / -16.2					+ 5.4 / -15.6				

CIE Pub.117, 1227 lm Total Lamp Luminous Flux Correct (8log(F/F0) = 0.7)  
Area: 0.00188479 m2

C Range: 0 - 360DEG  
C Interval: 30.0DEG  
Test Speed: MEDIUM  
Temperature:25.3℃  
Operators:zoe  
Test Date:2024-9-12

Range: 0 - 180DEG  
Interval: 0.5DEG  
Test System:EVERFINE GO-SPEX500\_V1 SYSTEM V2.00.461  
Humidity:65.0%  
Test Distance:3.160m [K=1.0000]  
Remarks: LAMP:BXRH-30G10T0-C-83 Ra:90  
LENS:PM-1082 15R  
DRIVER:SC20W150-500CG-4W 300mA  
30minutes warm-up



### UTILIZATION FACTORS TABLE

Test:U:220.16V I:0.0593A P:11.210W PF:0.8541 Freq:49.99Hz Lamp Flux:1227.27x1 lm		
NAME: 2419.205-UA-300	TYPE:	WEIGHT:
SPEC.: 3000K	DIM.:	SERIAL No.: 2409121197
MFR.: RISE	SUR.: 0.001884785m2	Shielding Angle:

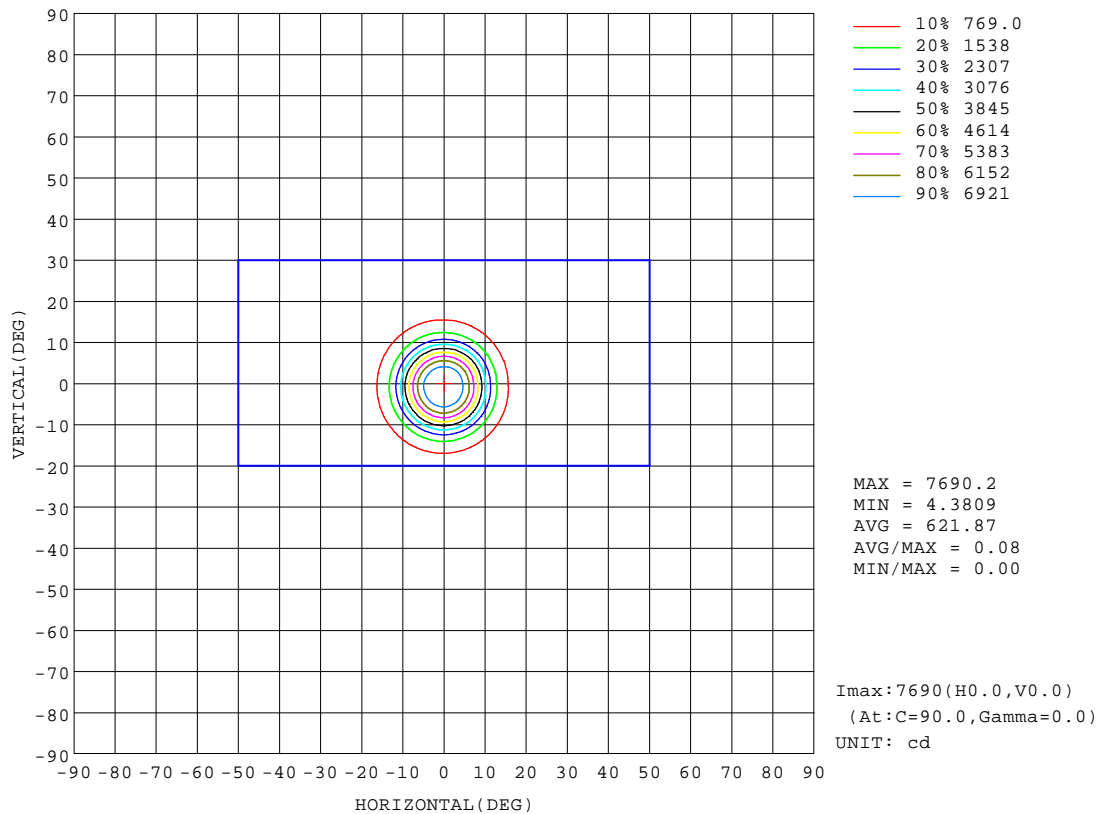
REFLECTANCE										
Ceiling	0.8	0.8	0.8	0.7	0.7	0.7	0.5	0.5	0.5	0
Walls	0.7	0.5	0.3	0.7	0.5	0.3	0.7	0.5	0.3	0
Working plane	0.2	0.2	0.2	0.2	0.2	0.2	0.2	0.2	0.2	0
ROOM INDEX	UTILIZATION FACTORS(PERCENT) $k(RI) \times RCR = 5$									
k = 0.60	73	68	66	73	68	65	72	68	65	63
0.80	79	75	72	78	74	72	77	74	71	69
1.00	82	78	75	81	78	75	80	77	75	72
1.25	85	81	79	84	81	78	83	80	78	75
1.50	87	84	81	86	83	81	84	82	80	76
2.00	89	86	83	88	85	83	86	83	82	78
2.50	90	87	85	89	86	84	86	84	83	78
3.00	91	89	87	90	88	86	87	85	84	79
4.00	93	91	89	91	89	88	88	87	86	80
5.00	94	92	91	92	91	89	89	88	87	81
ROOM INDEX	UF(total)									Direct
According to DIN EN 13032-2 2004			Suspended					SHRNOM = 1.25		

C Range: 0 - 360DEG  
C Interval: 30.0DEG  
Test Speed: MEDIUM  
Temperature:25.3 °C  
Operators:zoe  
Test Date:2024-9-12

Range: 0 - 180DEG  
Interval: 0.5DEG  
Test System:EVERFINE GO-SPEX500\_V1 SYSTEM V2.00.461  
Humidity:65.0%  
Test Distance:3.160m [K=1.0000]  
Remarks: LAMP:BXRH-30G10T0-C-83 Ra:90  
LENS:PM-1082 15R  
DRIVER:SC20W150-500CG-4W 300mA  
30minutes warm-up

## ISOCANDELA DIAGRAM

Test:U:220.16V I:0.0593A P:11.210W PF:0.8541 Freq:49.99Hz Lamp Flux:1227.27x1 lm		
NAME: 2419.205-UA-300	TYPE:	WEIGHT:
SPEC.: 3000K	DIM.:	SERIAL No.: 2409121197
MFR.: RISE	SUR.: 0.001884785m2	Shielding Angle:

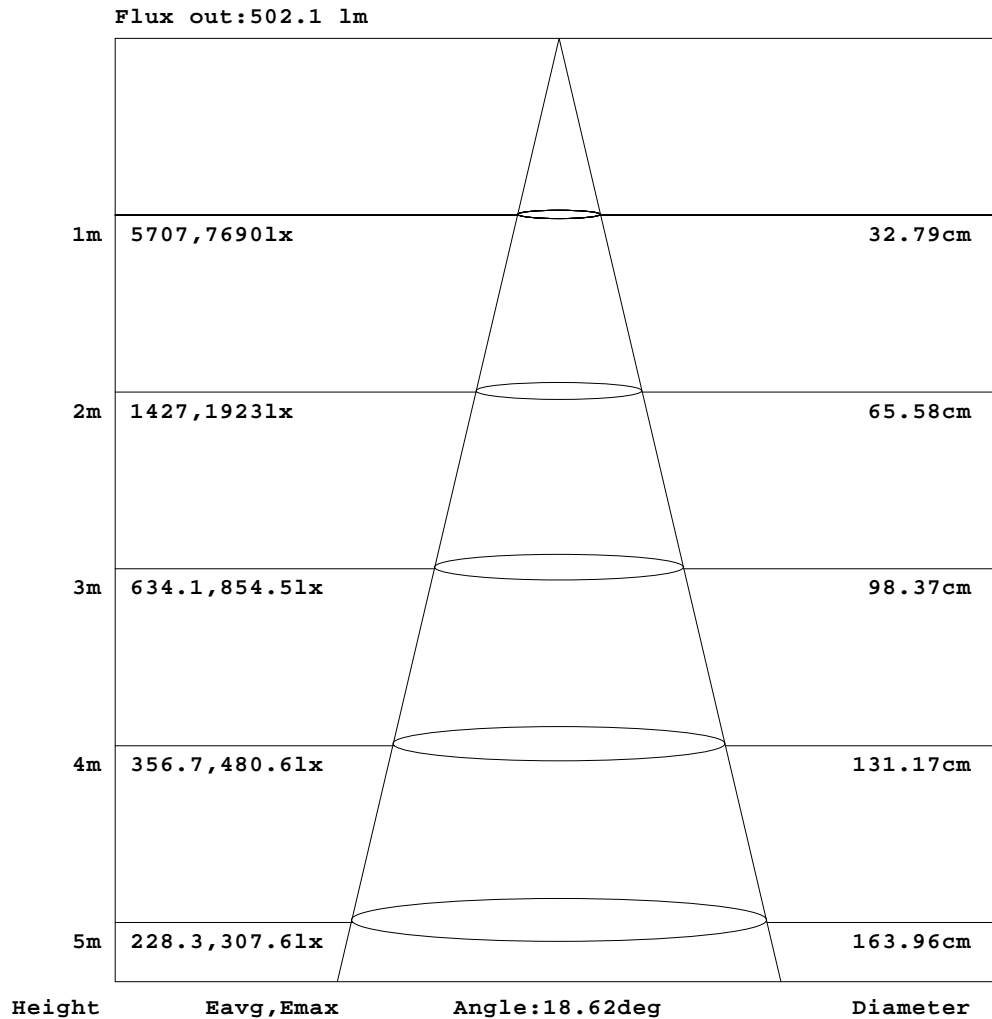


C Range: 0 - 360DEG  
C Interval: 30.0DEG  
Test Speed: MEDIUM  
Temperature:25.3℃  
Operators:zoe  
Test Date:2024-9-12

Range: 0 - 180DEG  
Interval: 0.5DEG  
Test System:EVERFINE GO-SPEX500\_V1 SYSTEM V2.00.461  
Humidity:65.0%  
Test Distance:3.160m [K=1.0000]  
Remarks: LAMP:BXRH-30G10T0-C-83 Ra:90  
LENS:PM-1082 15R  
DRIVER:SC20W150-500CG-4W 300mA  
30minutes warm-up

## AAI Figure

Test:U:220.16V I:0.0593A P:11.210W PF:0.8541 Freq:49.99Hz Lamp Flux:1227.27x1 lm		
NAME: 2419.205-UA-300	TYPE:	WEIGHT:
SPEC.: 3000K	DIM.:	SERIAL No.: 2409121197
MFR.: RISE	SUR.: 0.001884785m2	Shielding Angle:



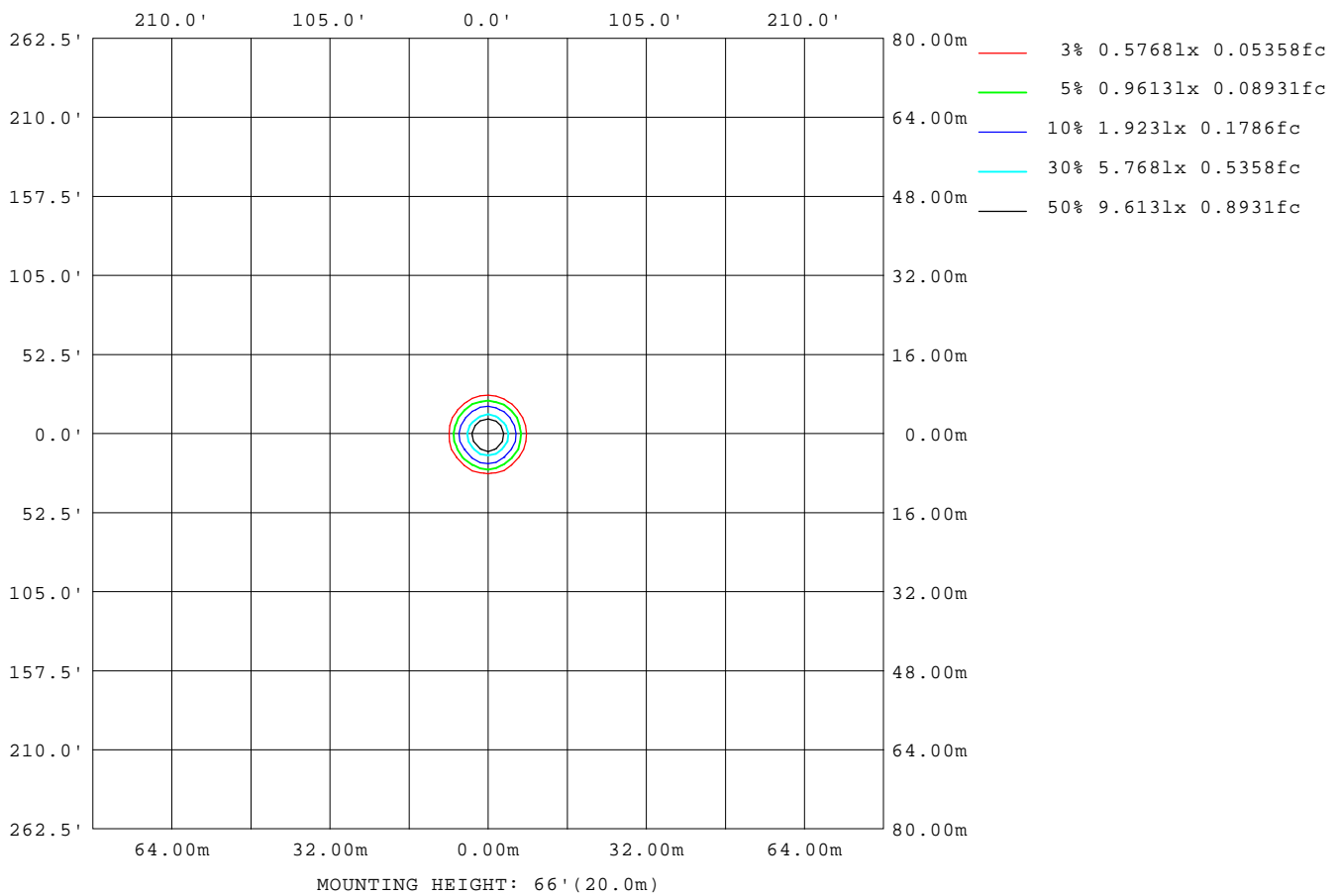
Note:The Curves indicate the illuminated area and the average illumination when the luminaire is at different distance.

C Range: 0 - 360DEG  
C Interval: 30.0DEG  
Test Speed: MEDIUM  
Temperature:25.3℃  
Operators:zoe  
Test Date:2024-9-12

Range: 0 - 180DEG  
Interval: 0.5DEG  
Test System:EVERFINE GO-SPEX500\_V1 SYSTEM V2.00.461  
Humidity:65.0%  
Test Distance:3.160m [K=1.0000]  
Remarks: LAMP:BXRH-30G10T0-C-83 Ra:90  
LENS:PM-1082 15R  
DRIVER:SC20W150-500CG-4W 300mA  
30minutes warm-up

## ISOLUX DIAGRAM

Test:U:220.16V I:0.0593A P:11.210W PF:0.8541 Freq:49.99Hz Lamp Flux:1227.27x1 lm		
NAME: 2419.205-UA-300	TYPE:	WEIGHT:
SPEC.: 3000K	DIM.:	SERIAL No.: 2409121197
MFR.: RISE	SUR.: 0.001884785m2	Shielding Angle:



C Range: 0 - 360DEG  
C Interval: 30.0DEG  
Test Speed: MEDIUM  
Temperature:25.3°C  
Operators:zoe  
Test Date:2024-9-12

Range: 0 - 180DEG  
Interval: 0.5DEG  
Test System:EVERFINE GO-SPEX500\_V1 SYSTEM V2.00.461  
Humidity:65.0%  
Test Distance:3.160m [K=1.0000]  
Remarks: LAMP:BXRH-30G10T0-C-83 Ra:90  
LENS:PM-1082 15R  
DRIVER:SC20W150-500CG-4W 300mA  
30minutes warm-up

### LED Avg.L Report

Test:U:220.16V I:0.0593A P:11.210W PF:0.8541 Freq:49.99Hz Lamp Flux:1227.27x1 lm		
NAME: 2419.205-UA-300	TYPE:	WEIGHT:
SPEC.: 3000K	DIM.:	SERIAL No.: 2409121197
MFR.: RISE	SUR.: 0.001884785m2	Shielding Angle:

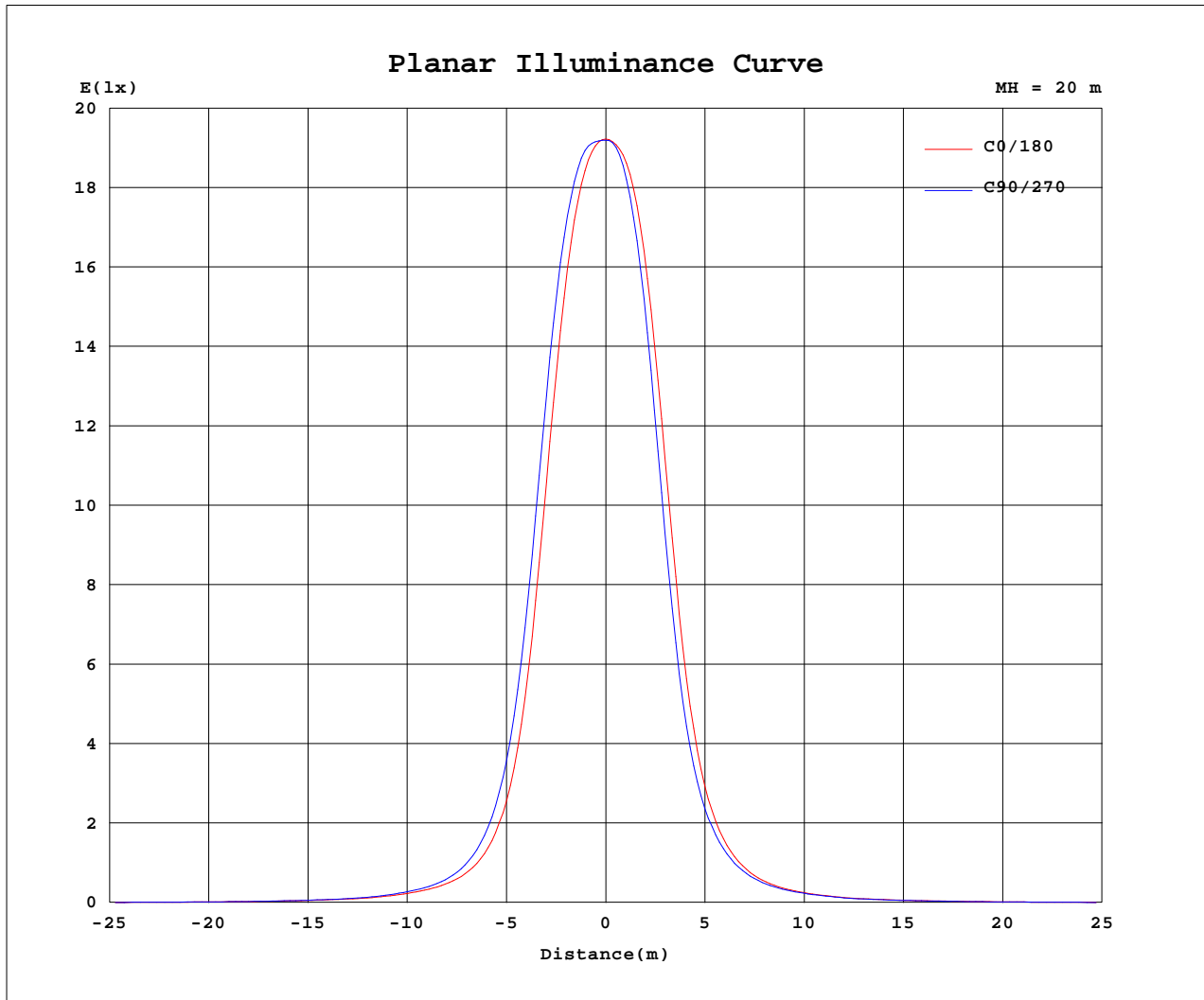
AvgL	cd/m2
L_0~180(65)av	347
L_0~180(75)av	211
L_0~180(85)av	285
L_90~270(65)av	344
L_90~270(75)av	201
L_90~270(85)av	290
L_45(65)av	342
L_45(75)av	185
L_45(85)av	162

Standard: GB/T 29293-2012

C Range: 0 - 360DEG  
C Interval: 30.0DEG  
Test Speed: MEDIUM  
Temperature:25.3℃  
Operators:zoe  
Test Date:2024-9-12

Range: 0 - 180DEG  
Interval: 0.5DEG  
Test System:EVERFINE GO-SPEX500\_V1 SYSTEM V2.00.461  
Humidity:65.0%  
Test Distance:3.160m [K=1.0000]  
Remarks: LAMP:BXRH-30G10T0-C-83 Ra:90  
LENS:PM-1082 15R  
DRIVER:SC20W150-500CG-4W 300mA  
30minutes warm-up

## Planar Illuminance Curve



C Range: 0 - 360DEG  
 C Interval: 30.0DEG  
 Test Speed: MEDIUM  
 Temperature: 25.3 °C  
 Operators: zoe  
 Test Date: 2024-9-12

Range: 0 - 180DEG  
 Interval: 0.5DEG  
 Test System: EVERFINE GO-SPEX500\_V1 SYSTEM V2.00.461  
 Humidity: 65.0%  
 Test Distance: 3.160m [K=1.0000]  
 Remarks: LAMP: BXRH-30G10T0-C-83 Ra:90  
 LENS: PM-1082 15R  
 DRIVER: SC20W150-500CG-4W 300mA  
 30minutes warm-up



## LUMINOUS DISTRIBUTION INTENSITY DATA

Test:U:220.16V I:0.0593A P:11.210W PF:0.8541 Freq:49.99Hz Lamp Flux:1227.27x1 lm		
NAME: 2419.205-UA-300	TYPE:	WEIGHT:
SPEC.: 3000K	DIM.:	SERIAL No.: 2409121197
MFR.: RISE	SUR.: 0.001884785m2	Shielding Angle:

Table--1

UNIT: cd

C(DEG) (DEG)	0	30	60	90	120	150	180	210	240	270	300	330						
0	7681	7681	7681	7681	7681	7681	7681	7681	7681	7681	7681	7681						
5	6715	6924	7098	7187	7153	7027	6879	6670	6523	6465	6532	6648						
10	3182	3582	3920	4081	3982	3719	3432	3068	2837	2742	2816	3008						
15	893	1017	1143	1236	1200	1108	1021	936	884	846	835	856						
20	319	348	384	412	408	387	365	345	334	323	315	313						
25	157	167	179	188	183	176	170	164	163	158	154	153						
30	85.2	89.6	93.6	98.0	94.5	92.4	92.3	90.6	89.5	87.6	82.8	82.4						
35	52.2	53.5	55.3	57.0	55.2	55.0	55.9	54.8	54.1	53.0	50.9	50.6						
40	33.3	33.6	34.2	35.6	35.4	35.9	36.3	35.7	35.2	34.7	33.5	33.1						
45	20.9	21.0	21.2	22.1	22.3	22.7	23.0	22.7	22.4	22.0	21.5	21.1						
50	11.5	11.4	11.6	12.3	12.5	12.8	13.0	12.7	12.4	12.2	12.0	11.8						
55	5.38	5.52	5.74	5.89	5.96	6.01	6.14	5.92	5.69	5.55	5.53	5.52						
60	2.01	2.11	1.79	1.81	2.30	2.26	1.95	1.72	2.02	1.94	1.55	1.66						
65	0.26	0.27	0.28	0.29	0.30	0.30	0.29	0.28	0.27	0.26	0.24	0.24						
70	0.14	0.14	0.15	0.16	0.16	0.16	0.15	0.14	0.13	0.13	0.12	0.12						
75	0.10	0.09	0.10	0.11	0.11	0.10	0.10	0.09	0.08	0.09	0.08	0.08						
80	0.07	0.06	0.06	0.08	0.06	0.06	0.07	0.05	0.05	0.06	0.05	0.05						
85	0.05	0.03	0.03	0.05	0.03	0.03	0.04	0.03	0.03	0.04	0.03	0.03						
90	0.00	0.00	0.00	0.00	0.00	0.00	0.00	0.00	0.00	0.00	0.00	0.00						
95	0.00	0.00	0.00	0.00	0.00	0.00	0.00	0.00	0.00	0.00	0.00	0.00						
100	0.00	0.00	0.00	0.00	0.00	0.00	0.00	0.00	0.00	0.00	0.00	0.00						
105	0.00	0.00	0.00	0.00	0.00	0.00	0.00	0.00	0.00	0.00	0.00	0.00						
110	0.00	0.00	0.00	0.00	0.00	0.00	0.00	0.00	0.00	0.00	0.00	0.00						
115	0.00	0.00	0.00	0.00	0.00	0.00	0.00	0.00	0.00	0.00	0.00	0.00						
120	0.00	0.00	0.00	0.00	0.00	0.00	0.00	0.00	0.00	0.00	0.00	0.00						
125	0.00	0.00	0.00	0.00	0.00	0.00	0.00	0.00	0.00	0.00	0.00	0.00						
130	0.00	0.00	0.00	0.00	0.00	0.00	0.00	0.00	0.00	0.00	0.00	0.00						
135	0.00	0.00	0.00	0.00	0.00	0.00	0.00	0.00	0.00	0.00	0.00	0.00						
140	0.00	0.00	0.00	0.00	0.00	0.00	0.00	0.00	0.00	0.00	0.00	0.00						
145	0.00	0.00	0.00	0.00	0.00	0.00	0.00	0.00	0.00	0.00	0.00	0.00						
150	0.00	0.00	0.00	0.00	0.00	0.00	0.00	0.00	0.00	0.00	0.00	0.00						
155	0.00	0.00	0.00	0.00	0.00	0.00	0.00	0.00	0.00	0.00	0.00	0.00						
160	0.00	0.00	0.00	0.00	0.00	0.00	0.00	0.00	0.00	0.00	0.00	0.00						
165	0.00	0.00	0.00	0.00	0.00	0.00	0.00	0.00	0.00	0.00	0.00	0.00						
170	0.00	0.00	0.00	0.00	0.00	0.00	0.00	0.00	0.00	0.00	0.00	0.00						
175	0.00	0.00	0.00	0.00	0.00	0.00	0.00	0.00	0.00	0.00	0.00	0.00						
180	0.00	0.00	0.00	0.00	0.00	0.00	0.00	0.00	0.00	0.00	0.00	0.00						

C Range: 0 - 360DEG  
C Interval: 30.0DEG  
Test Speed: MEDIUM  
Temperature:25.3℃  
Operators:zoe  
Test Date:2024-9-12

Range: 0 - 180DEG  
Interval: 0.5DEG  
Test System:EVERFINE GO-SPEX500\_V1 SYSTEM V2.00.461  
Humidity:65.0%  
Test Distance:3.160m [K=1.0000]  
Remarks: LAMP:BXRH-30G10T0-C-83 Ra:90  
LENS:PM-1082 15R  
DRIVER:SC20W150-500CG-4W 300mA  
30minutes warm-up